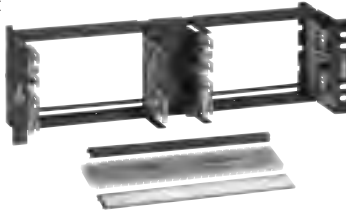


## GigaBIX Multi System

### Termination Kits and Basic Components

AX101985 GigaBIX Rack Mount Termination Kit, 48-port



AX101470  
GigaBIX  
Termination Kit,  
72-port

AX101447 GigaBIX Connector, 6-port



AX101986 GigaBIX Rack Mount Panel



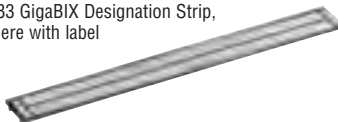
AX101472  
GigaBIX Mount



AX101486 GigaBIX Wire Guard



AX101483 GigaBIX Designation Strip, shown here with label



AX101987 GigaBIX/MediaFlex Adapter



#### GigaBIX Termination Kits

The **GigaBIX Termination Kits** contains all components required to terminate cables in a GigaBIX Cross-Connect or Interconnect System. The Termination Kits allow for the most cost-effective Category 6 cross-connect or interconnect installations using GigaBIX Cross-Connect Wire or GigaBIX PS6+ Patch Cords. The GigaBIX Mount is designed to accommodate high-performance cables. The GigaBIX Connectors have color-coded edges, separation marks and a keying feature that prevents connector insertion in the wrong orientation. Each kit also contains Wire Guards, Designation Strips, Designation Labels, Velcro ties and a detailed installation guide.

#### GigaBIX Connector

The **GigaBIX Connector** is the core component of the GigaBIX Multi System. Its symmetrical construction allows termination of high-performance cables on one side and GigaBIX Cross-Connect Wires or GigaBIX Patch Cords on the other. Each GigaBIX Connector is equipped with 50 double-ended Insulation Displacement Connection (IDC) clips for terminating plastic insulated solid copper conductors without stripping. The connector is built with two staggered rows of IDC clips enclosed in a three-layer construction of fire-retardant plastic wafers. The GigaBIX Connectors have color-coded edges, separation marks and a keying feature that prevents connector insertion in the wrong orientation. The GigaBIX Connector offers exceptional performance that goes Beyond Category 6 which makes it the ideal choice for gigabit cabling networks.

#### GigaBIX Mount

The **GigaBIX Mount** for wall installations holds 12 GigaBIX Connectors and is designed to accommodate up to 144 high-performance cables when used in a top-to-bottom cross-connect layout.

The **GigaBIX Rack Mount Panel** allows for customizing rack mount installations for data, voice or multimedia installations. This panel can accommodate up to 8 GigaBIX Connectors, for a total of 48 terminations of 4-pair UTP cables, or up to 4 GigaBIX/MediaFlex Adapters for a total of 48 multimedia ports.

#### GigaBIX Wire Guard

The **GigaBIX Wire Guards** are plastic strips that snap behind the GigaBIX Connectors after termination to provide strain relief to the twisted pairs. They come as part of the GigaBIX Termination Kits and can also be ordered separately as replacement components.

#### GigaBIX Designation Strip

The **GigaBIX Designation Strips** are plastic strips that snap between the GigaBIX Connectors to apply the designation labels. They come as part of the GigaBIX Termination Kits and can also be ordered separately as replacement components. (See the LabelFlex section for designation labels.)

#### GigaBIX/MediaFlex Adapter

The **GigaBIX/MediaFlex Adapter** allows for mixed media installation within the expanded GigaBIX Multi family of connectivity. The GigaBIX/MediaFlex Adapter can accommodate a variety of MediaFlex inserts including UTP and multimedia inserts to customize multimedia installation in Telecommunications Rooms, Equipment Rooms, or Consolidation Points.

Description	Belden Part Number
<b>GigaBIX Multi System</b>	
<b>Termination Kits</b>	
GigaBIX Termination Kit, 72-port	AX101470
GigaBIX Termination Kit, 300-pair	AX101471
GigaBIX Rack Mount Termination Kit, 48-port	AX101985
<b>Basic Components</b>	
GigaBIX Connector, 6-port	AX101447
GigaBIX Connector, 25-pair	AX101448
GigaBIX Mount, 12-connector	AX101472
GigaBIX Rack Mount Panel, 48-port	AX101986
GigaBIX Wire Guard	AX101486
GigaBIX Designation Strip	AX101483
GigaBIX/MediaFlex Adapter	AX101987

These products are in the process of being assessed for RoHS compliance. Please check our Web Site for the most current RoHS status.

## GigaBIX Multi System

### Patch Cords and Cross-Connect Wire

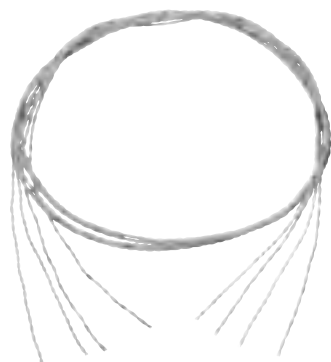
AX101945 GigaBIX PS6+ Patch Cord, BIX-BIX, 4 ft.



AX101951 GigaBIX PS6+ Patch Cord, BIX-8MOD, 4 ft.



24570521 GigaBIX Cross-connect Wire, 4-pair



#### GigaBIX Patch Cords

GigaBIX Patch Cords allow for high-density connections, coupled with flexibility for cost-effective installation and administration. Plug-and-go installation and rearrangement of patch cords do not require any special tools or training. GigaBIX Patch Cords are available in two different configurations: BIX-BIX patch cord configurations for easy cross-connection between equipment and distribution fields, and BIX-8MOD patch cord configurations to easily interconnect equipment utilizing 8-position modular jacks directly into GigaBIX Connectors in the distribution field.

**The GigaBIX PS6+ Patch Cords** are 4-pair 23 AWG UTP cords. They are used in GigaBIX Multi System as part of a Belden IBDN System 2400 and System 4800LX, providing a channel bandwidth of 250 MHz and 300 MHz respectively.

**The GigaBIX PS5E Patch Cords** are used in the GigaBIX Multi System as part of a Belden IBDN System 1200, providing outstanding channel bandwidth of 160 MHz.

Description	Belden Part Number		
	BIX-BIX	BIX-8MOD T568A-ISDN	BIX-8MOD T568B-ALT

#### GigaBIX Multi System

PS6+ Patch Cords			
4 ft. (1.2 m)	AX101945	AX101951	AX101957
6 ft. (1.8 m)	AX101946	AX101952	AX101958
8 ft. (2.4 m)	AX101947	AX101953	AX101959
10 ft. (3.0 m)	AX101948	AX101954	AX101960
15 ft. (4.6 m)	AX101949	AX101955	AX101961
25 ft. (7.6 m)	AX101950	AX101956	AX101962
PS5E Patch Cords			
4 ft. (1.2 m)	AX101963	AX101969	AX101975
6 ft. (1.8 m)	AX101964	AX101970	AX101976
8 ft. (2.4 m)	AX101965	AX101971	AX101977
10 ft. (3.0 m)	AX101966	AX101972	AX101978
15 ft. (4.6 m)	AX101967	AX101973	AX101979
25 ft. (7.6 m)	AX101968	AX101974	AX101980

These products are in the process of being assessed for RoHS compliance. Please check our Web Site for the most current RoHS status.

#### GigaBIX Cross-Connect Wire

**GigaBIX Cross-Connect Wire** is intended for use between GigaBIX cross-connect fields in a Telecommunications Room or in a Main Cross-Connect Frame. Using GigaBIX Cross-Connect Wire allows for very flexible and cost-effective installations. The cut-to-length jumper eliminates need for slack management and guarantees permanent installation aesthetics. The GigaBIX Cross-Connect Wire offers transmission performance that goes Beyond Category 6 providing additional margin to support Gigabit applications.

**Color Code:** White/Blue, White/Orange, White/Green, White/Brown.

Description	Belden Part Number
-------------	--------------------

#### GigaBIX Multi System

Cross-Connect Wire	
4-pair, 1000 ft. (305 m), Spool	24570521
4-pair, 1000 ft. (305 m), Spool-in-Box	24577B15

These products are in the process of being assessed for RoHS compliance. Please check our Web Site for the most current RoHS status.

## GigaBIX Multi System

### Cable Management Accessories

AX102154 GigaBIX Color-Coded Clip



AX101469 GigaBIX Cable Management Module



AX101468 GigaBIX Patch Cord Organizer and AX101521 GigaBIX Patch Cord Organizer Cover



AX101520 GigaBIX Horizontal Channel Plate



AX101478 GigaBIX Management Ring



#### GigaBIX Colored Service Clips

The **GigaBIX Colored Service Clip** is a single-pair plastic clip that snaps on the GigaBIX connectors to visually identify various services when using GigaBIX Cross-Connect Wire.

#### GigaBIX Cable Management Module

The **GigaBIX Cable Management Module** is designed to be used with a wall mount solution. The accessory allows all terminated cables to be brought from the same side (top or bottom) in a high-density GigaBIX installation (4-mount stack). The modules are stackable side-to-side and top-to-bottom with alignment features to ease installation. The modules can be used horizontally to create a horizontal management channel for more flexibility in a side-to-side patching layout using GigaBIX Patch Cords.

#### GigaBIX Patch Cord Organizer

The **GigaBIX Patch Cord Organizer** is designed to be used with a wall mount solution. The Patch Cord Organizer is a metal trough that interlocks with GigaBIX Mounts to create a vertical management channel for GigaBIX Patch Cords. The Patch Cord Organizer has six (6) openings per side to nicely dress the patch cords while clearing the labeling area on the GigaBIX Mount. The organizer can be assembled over Cable Management Modules in large patch cord installations. A Patch Cord Organizer Cover can be purchased separately to hide the patch cords and give a very professional and high-tech look to the installation.

#### GigaBIX Horizontal Channel Plate

**GigaBIX Horizontal Channel Plates** are metal plates that attach to the Patch Cord Organizers to create a horizontal management channel for GigaBIX Patch Cords. The plates are used in pairs and are designed to keep patch cords inside the horizontal channel.

#### GigaBIX Management Ring

The **GigaBIX Management Ring** is a plastic ring that interlocks with the GigaBIX Mounts to create a high-density wall mount cross-connect system. The rings are assembled in systems when using cross-connect wire and have a capacity of 450 GigaBIX Cross-Connect Wires (1800-pairs total).

Description	Belden Part Number
<b>GigaBIX Multi System</b>	
<b>Cable Management Accessories</b>	
GigaBIX Color-Coded Clip, Gray	AX102146
GigaBIX Color-Coded Clip, Almond	AX102147
GigaBIX Color-Coded Clip, White	AX102148
GigaBIX Color-Coded Clip, Black	AX102149
GigaBIX Color-Coded Clip, Orange	AX102150
GigaBIX Color-Coded Clip, Red	AX102151
GigaBIX Color-Coded Clip, Yellow	AX102152
GigaBIX Color-Coded Clip, Green	AX102153
GigaBIX Color-Coded Clip, Blue	AX102154
GigaBIX Color-Coded Clip, Purple	AX102155
GigaBIX Color-Coded Clip, Brown	AX102156
GigaBIX Cable Management Module	AX101469
GigaBIX Patch Cord Organizer	AX101468
GigaBIX Patch Cord Organizer, Cover	AX101521
GigaBIX Horizontal Channel Plate	AX101520
GigaBIX Management Ring	AX101478

These products are in the process of being assessed for RoHS compliance. Please check our Web Site for the most current RoHS status.

# GigaBIX Multi System

## Cable Management Accessories

### GigaBIX Distribution Frame & Accessories

GigaBIX Distribution Frames provide a compact mounting unit for large cross-connect installations of data or voice services.

The **GigaBIX Distribution Frame** can accommodate up to (16) 12-connector GigaBIX Mounts, eight on the equipment side and eight on the distribution side. The GigaBIX Distribution Frame has a capacity of 1152 ports or 4800 pairs. It is backwards compatible with BIX Mounts (QMBIX12E) and can be used to continue a row of BIX Distribution Frames (QFBIX24E).

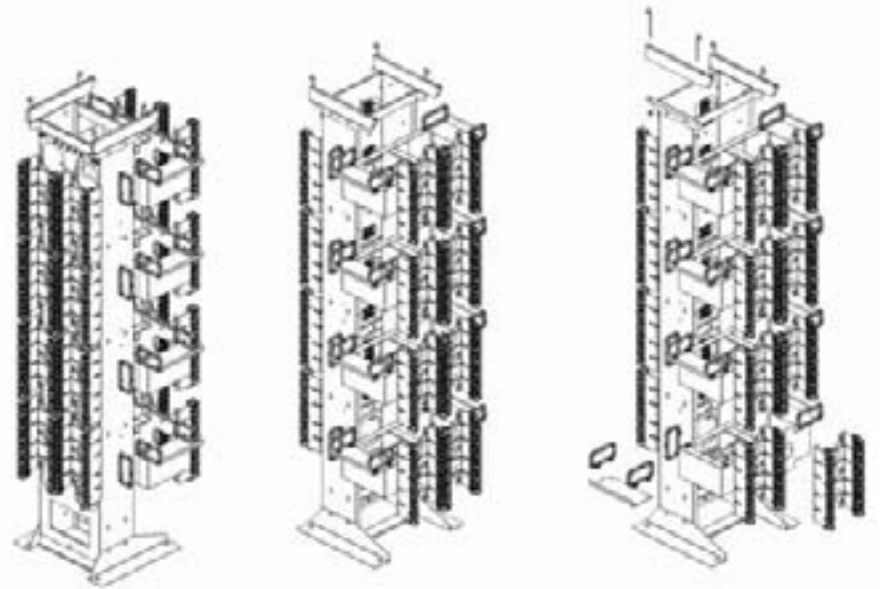
The **GigaBIX Frame End Kit** consists of eight (8) cable trays and eight (8) distribution rings plus appropriate mounting hardware. One kit is required to support GigaBIX Cross-Connect Wires on the sides of a single-frame installation or on the end frames of a multi-frame installation.

The **GigaBIX Overhead Kit** consists of two (2) metal bars and four (4) “J” bolts plus appropriate mounting hardware to support cable ladder (not included) running over a row of GigaBIX Distribution Frames.

Description	Belden Part Number
<b>GigaBIX Multi System</b>	
<b>Cable Management Accessories</b>	
Distribution Frame, 1152 ports/4800 pairs	AX102073
Frame End Kit	AX102082
Frame Overhead Kit	AX102145

These products are in the process of being assessed for RoHS compliance. Please check our Web Site for the most current RoHS status.

AX102073 GigaBIX Distribution Frame



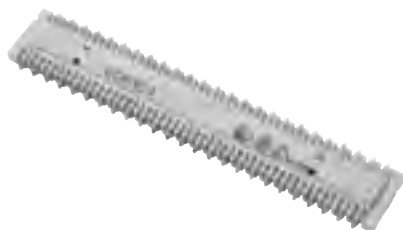
## BIX Cross-Connect System

### Distribution Connectors, Multiplying Connectors and Modular Jack Connectors

A0393146 QCBIX1A4 Connector



A0266827 QCBIX5A Multiplying Connector



AX100798 BIX Modular Jack Connector



#### BIX Distribution Connector

The **BIX Distribution Connector** is a 25-pair connector. The connector's symmetrical construction allows termination of cables on one side and cross-connect jumper wires or BIX Patch Cords on the other. Each BIX connector is equipped with 50 double-ended Insulation Displacement Connection (IDC) clips for terminating plastic insulated solid copper conductors without stripping and pair splitters on each side of the connector facilitate wire insertion.

#### BIX Multiplying Connector

**BIX Multiplying Connectors** are used to generate multiple outputs from a single input. Construction of these connectors is identical to that of BIX Distribution Connectors, except for the IDC clips which are bridged. BIX Multiplying Connectors are typically used in voice applications.

The QCBIX2A Connector is built using 24 sets of bridged clips (2 clips each). It is used to terminate various facilities where multiples of 2 are required.

The QCBIX5A Connector is built using 10 sets of bridged clips (5 clips each). It is used for multiple jumper connections to the same equipment.

The QCBIX7A Connector is built using 10 sets of bridged clips (four 2-clip and six 7-clip bridged arrangements). It is primarily intended for use with 1A type key telephone systems. Each connector can terminate up to three lines of key equipment providing service to as many as seven key telephone sets per line.

#### BIX Modular Jack Connector

**BIX Modular Jack Connectors** provide a fast and flexible method to manage small-to-medium cross-connect installations. These connectors are built with a BIX connector pre-wired to standard modular jacks. They allow front-access termination and patching.

The NXXCBMC6U Connector is a 6-port, 8-position modular connector used for data applications. It exceeds all Category 5e channel requirements when used with PS5E Modular Cords in a Belden IBDN 1200 System.

QCBIX36-type Connectors are used mostly for voice applications. The QCBIX36D connector is a 6-port, 8-position modular connector. It is pre-wired to USOC 8-wire wiring scheme specifications. The QCBIX36C connector is an 8-port, 6-position modular connector. It is pre-wired to USOC 6-wire wiring scheme specifications. The QCBIX36B connector is a 12-port, 6-position modular connector. It is pre-wired to USOC 4-wire wiring scheme specifications.

Description	Belden Part Number
-------------	--------------------

#### BIX Cross-Connect System

Distribution Connector	
BIX Distribution Connector, 5-pair Marking	A0266828
BIX Distribution Connector, 4-pair Marking	A0393146
Multiplying Connector	
BIX Multiplying Connector, QCBIX2A, 25-pair, 12x2-pair	A0269923
BIX Multiplying Connector, QCBIX5A, 25-pair, 5x5-pair	A0266827
BIX Multiplying Connector, QCBIX7A, 25-pair, 2x2-pair & 3x7-pair	A0269925
Modular Jack Connector	
BIX Modular Jack Connector, NXXCBMC6U, 6-port, PS5E, T568A/B Coded	AX100798
BIX Modular Jack Connector, QCBIX36D, 6-port, USOC, 8-pin	A0341173
BIX Modular Jack Connector, QCBIX36C, 8-port, USOC, 6-pin	A0330864
BIX Modular Jack Connector, QCBIX36B, 12-port, USOC, 4-pin	A0330863

These products are in the process of being assessed for RoHS compliance. Please check our Web Site for the most current RoHS status.



## BIX Cross-Connect System

### Mounts, Covers and Wire Management Accessories

A0340836 QMBIX12E BIX Mount, 300-pair



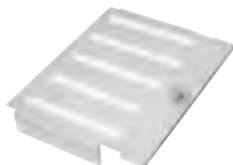
A0284798 QMBIX10C BIX Mount, 50-pair



A0277853 QMBIX31A 50-pair Mount with Locking Cover



A0285986 Locking Cover for 250-pair Mount



A0276396 BIX Cover, QMBIX10A, Stand-alone installation, Locking



A0270168 Distribution Ring



#### BIX Mount

**BIX Mounts** are basic components used in building a cross-connect system. They can accept BIX Distribution, Multiplying or Modular Jack Connectors. The 300 and 250-pair mounts can be wall-mounted or installed on BIX Frames. These mounts feature an interlocking design allowing them to be stacked for larger cross-connect installations.

The **BIX 50-pair Mount** is typically used in small cross-connect installations. Also available is a 50-pair mount with cover that is sold as an assembly and is typically used in small cross-connect installations where security and/or dust protection is required.

#### BIX Cover

**BIX Covers** can be used to restrict access of cross-connect installations for better protection and security. Two sizes are available to suit either the QMBIX12E 300-pair mount or the QMBIX10A 250-pair mount. The two locking covers used in wall or frame-mounted installations are molded with translucent plastic allowing visual inspection. Also available are two covers used exclusively in stand-alone QMBIX10A 250-pair mount installations: one locking, the other non-locking—both have four cable entries, one at each corner.

#### Distribution Ring

The **Distribution Ring** is used in wall mount installations providing a cross-connect channel for jumper wires, patch cords and cables. The Distribution Ring interlocks with the QMBIX12E or QMBIX10A mounts, providing proper spacing and alignment.

Description	Belden Part Number
<b>BIX Cross-Connect System</b>	
<b>BIX Mount</b>	
BIX Mount, QMBIX12E (300-pair)	A0340836
BIX Mount, QMBIX10A (250-pair)	A0270164
BIX Mount, QMBIX10C (50-pair)	A0284798
<b>BIX Mount with Cover</b>	
BIX Mount with Cover, (Locking), 50-pair	A0277853
BIX Mount with Cover, (Snap-on), 50-pair	A0277854
<b>BIX Locking Cover</b>	
BIX Locking Cover, for QMBIX12E (300-pair)	A0340838
BIX Locking Cover, for QMBIX10A (250-pair)	A0285986
<b>BIX Cover</b>	
BIX Cover, QMBIX10A, Stand-alone installation, locking	A0276396
BIX Cover, QMBIX10A, Stand-alone installation, non-locking	A0276394
<b>Distribution Ring</b>	
Distribution Ring	A0270168

These products are in the process of being assessed for RoHS compliance. Please check our Web Site for the most current RoHS status.

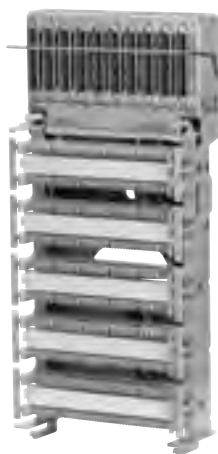
## BIX Cross-Connect System

### BIX Distribution Frames, Universal BIX-PAC and Trunk Access Blocks

A0340837 BIX Frame



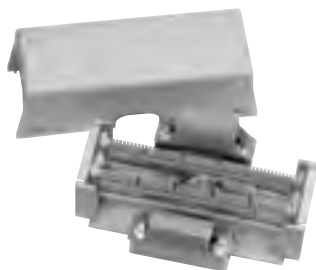
A0321776 Universal BIX-PAC Version 10-10



A0318897 BIX PAC Enclosure



A0327326 BIX Trunk Access Block



#### BIX Distribution Frame

**BIX Distribution Frames** provide a compact mounting unit for large cross-connect installations. The QFBIX24E BIX Frame can accommodate up to 16 QMBIX12E 300-pair mounts, eight on the vertical side and eight on the horizontal side. The QFBIX24E BIX Frame has a capacity of 4800-pair. The QFBIX24A BIX Frame can accommodate up to 16 QMBIX10A 250-pair mounts, eight on the vertical side and eight on the horizontal side. The QFBIX24A BIX Frame has a capacity of 4000-pair.

**The BIX Frame End Kit** consists of eight cable trays and eight distribution rings plus appropriate mounting hardware. One kit is required to support cross-connect wires on the sides of the shelves in a single-frame installation or on the end frames of a multi-frame installation.

**The Distribution Rings** are plastic rings used to manage cross-connect wires.

#### Universal BIX-PAC

**The Universal BIX-PAC** provides a fast, factory-wired, pre-tested and easy-to-install method of terminating wiring for the voice environment. A typical application for this product is in the main distribution terminal system or the riser terminal system, where it can provide connectivity and cross-connection for up to 250 pairs. The units come equipped with up to 10 QCBIX1A Connectors and 10 fifty-pin type telco connectors for the termination of connectorized cables. Also available is a BIX-PAC Enclosure, which is a fire-retardant polystyrene structural foam box that can house one BIX-PAC. The enclosure has a snap-on cover and removable panels for cable entry on top, bottom and sides.

#### BIX Trunk Access Block

**BIX Trunk Access Blocks** provide a fast, factory-wired, pre-tested and easy-to-install method for demarcation or testing points on customer premises. Typical applications are in the building entrance system or the main distribution terminal system, where the demarcation point between the network provider and the customer equipment usually can be found.

Description	Belden Part Number
-------------	--------------------

#### BIX Cross-Connect System

BIX Distribution Frame	
BIX Distribution Frame, 4800-pair (4 Shelves for 16 Mounts, 300-pair)	<b>A0340837</b>
BIX Distribution Frame, 4000-pair (4 Shelves for 16 Mounts, 250-pair)	<b>A0275511</b>
BIX Distribution Frame Accessories	
BIX Distribution Frame Accessories, End Kit (4 Shelves)	<b>A0275512*</b>
BIX Distribution Frame Accessories, Distribution Ring	<b>P0596540*</b>
Universal BIX-PAC	
Universal BIX-PAC, 10-8, 8 RJ21X Female to 8 QCBIX1A Connectors	<b>A0321775</b>
Universal BIX-PAC, 10-10, 10 RJ21X Female to 10 QCBIX1A Connectors	<b>A0321776</b>
BIX PAC Enclosure	
BIX PAC Enclosure, Gray	<b>A0318897</b>
BIX Trunk Access Block	
BIX Trunk Access Block, 1 RJ21X Female to 1 QCBIX1A Connector	<b>A0327325</b>
BIX Trunk Access Block, 2 RJ21X Female to 2 QCBIX1A Connector	<b>A0327326</b>

\*Eight Distribution Rings come as part of the BIX Distribution Frame End Kit. Additional Distribution Rings can be ordered separately. Use (1) end kit per row of frames.

These products are in the process of being assessed for RoHS compliance. Please check our Web Site for the most current RoHS status.

## BIX Cross-Connect System

### BIX Patch Cords and B-Plus Cross-Connect Wire

A0410494 BIX Patch Cord, BIX-BIX, 2-pair



A0410469 BIX Patch Cord, BIX-BIX, 1-pair



22208260 B-Plus Cross-Connect Wire



#### BIX Patch Cords

**BIX Patch Cords** allow for high-density connections, coupled with flexibility for cost-effective installation and administration. Installation and rearrangement of patch cords do not require any special tools or training. BIX Patch Cord plugs terminate directly into QCBIX1A/1A4 connectors.

#### B-Plus Cross-Connect Wire

**B-Plus Cross-Connect Wire** is intended primarily for use between incoming cables and station equipment in a Telecommunications Room or at a Main Cross-Connect.

**Z Cross-Connect Wire** is intended primarily for use in voice applications such as cross-connecting PBX or Key Telephone system equipment to backbone or horizontal distribution cables.

Description	Belden Part Number
<b>BIX Cross-Connect System</b>	
<b>BIX Patch Cord</b>	
BIX Patch Cord, BIX-BIX, 2-pair, 1.2 m (4 ft.)	<b>A0410494</b>
BIX Patch Cord, BIX-BIX, 1-pair, 1.2 m (4 ft.)	<b>A0410469</b>
BIX Patch Cord, BIX-BIX, 2-pair, 2.1 m (7 ft.)	<b>A0410495</b>
BIX Patch Cord, BIX-BIX, 1-pair, 2.1 m (7 ft.)	<b>A0410471</b>
BIX Patch Cord, BIX-BIX, 2-pair, 3.0 m (10 ft.)	<b>A0410496</b>
BIX Patch Cord, BIX-BIX, 1-pair, 3.0 m (10 ft.)	<b>A0410473</b>
BIX Patch Cord, BIX-BIX, 2-pair, 4.6 m (15 ft.)	<b>A0410497</b>
BIX Patch Cord, BIX-BIX, 1-pair, 4.6 m (15 ft.)	<b>A0410475</b>
BIX Patch Cord, BIX-BIX, 1-pair, 7.6 m (25 ft.)	<b>A0410493</b>
For 4-pair connections, please see the GigaBIX Patch Cord section.	
<b>B-Plus Cross-Connect Wire</b>	
24 AWG, 1-pair, Wh/Bl, 305 m (1000 ft.), K-Carton	<b>22208250</b>
24 AWG, 1-pair, Wh/Bl, 305 m (1000 ft.), Spool (S77)	<b>22208253</b>
24 AWG, 2-pair, Wh/Bl/Wh/Or, 305 m (1000 ft.), K-Carton	<b>22208260</b>
24 AWG, 2-pair, Wh/Gr/Wh/Or, 305 m (1000 ft.), K-Carton	<b>22208231</b>
24 AWG, 3-pair, Wh/Bl/Wh/Or/Wh/Gr, 152 m (500 ft.), K-Carton	<b>22208265</b>
24 AWG, 3-pair, Wh/Bl/Wh/Or/Wh/Gr, 200 m, K-Carton	<b>22208235</b>
24 AWG, 4-pair, Wh/Bl/Wh/Or/Wh/Gr/Wh/Br, 152 m (500 ft.), K-Carton	<b>22208270</b>
<b>Z Cross-Connect Wire</b>	
Z Cross-Connect Wire, 24 AWG, 1-pair, Bl/Ye, 300 m (984 ft.), Spool	<b>22208010</b>
Z Cross-Connect Wire, 24 AWG, 1-pair, Bl/Rd, 300 m (984 ft.), Spool	<b>22208067</b>

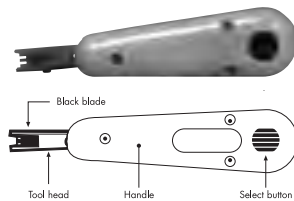
These products are in the process of being assessed for RoHS compliance. Please check our Web Site for the most current RoHS status.



## BIX Cross-Connect System

BIX Tools, Testing Tools,  
Accessories and Designation Strip

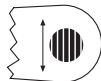
A0270165 BIX Connecting Tool



Tool in CUT position



Tool in NO CUT position



C0054642  
Tool Pouch



A0270166 BIX Test Probe



A0270172  
Special Service  
Guard



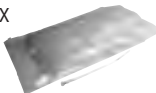
A0325493  
Bridging Clip



P0660798 BIX Wire  
Retainer



C0039222 BIX  
Cable Tie



A0352331 19 in. Rack  
Bracket Kit



A0270169 BIX Designation Strip



### BIX Connecting Tool

The **BIX Connecting Tool** is the only tool required to terminate cables, pigtails or jumper wires on all GigaBIX and BIX connection products. The BIX Connecting Tool is a spring-activated hand tool. A single forward movement will seat the wire into the BIX IDC clip and cut off the excess wire. The tool will terminate 22-26-AWG plastic insulated solid copper conductors. A separate leather BIX Tool Pouch to carry and protect the BIX Tool can be ordered.

### BIX Test Probe

The **BIX Test Probe** is a single-pair probe that clips onto the termination clip of BIX Distribution or BIX Modular Jack Connectors to facilitate testing.

### BIX Accessories

The **BIX Special Service Guard** is a single-pair red plastic clip used to identify a connection within a BIX distribution field that requires special attention prior to any maintenance work.

The **BIX Bridging Clip** is a single-pair clip used to bridge single-pair connections of two BIX connectors.

The **BIX Wire Retainer** is a plastic extrusion that fits over the terminated wires on a BIX Connector to prevent them from being pulled out of the IDC contacts. It can be used to secure a permanent connection on either side of a BIX Connector.

This **19 in. Rack Bracket Kit** provides the hardware for BIX Mount installation into a 19 in. rack. This kit comes complete with two mounting bars, four screws for rack mounting, four screws for BIX Mount assemblies and an installation guide.

**BIX Cable Ties** are used for securing wire bundles to the BIX Connector.

### BIX Designation Strip

The **BIX Designation Strip** is designed to be used in conjunction with all BIX Mounts and BIX Connectors. It snaps in between two connectors and provides space for self adhesive BIX labels. The strip is made of white fire-retardant plastic, with ridges on the top and bottom for easy alignment and placement of designation labels. (See the LabelFlex section for designation labels.)

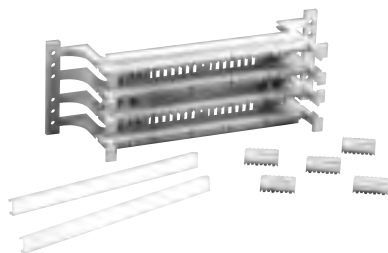
Description	Belden Part Number
<b>BIX Cross-Connect System</b>	
<b>BIX Tools</b>	
BIX Connecting Tool	A0270165
Tool Pouch	C0054642
<b>BIX Test Probe</b>	
BIX Test Probe, 1-pair, 1/pack	A0270166
<b>BIX Accessories</b>	
BIX Special Service Guard, 1-pair, Red, 50/pack	A0270172
BIX Bridging Clip, 1-pair, Gray, 50/pack	A0325091
BIX Bridging Clip, 1-pair, White, 50/pack	A0325493
BIX Wire Retainer, 100/pack	P0660798
19 in. Rack Bracket Kit, 2 bars/pack	A0352331
BIX Cable Tie, 100/pack	C0039222
<b>BIX Designation Strip</b>	
BIX Designation Strip, White, 50/pack	A0270169

These products are in the process of being assessed for RoHS compliance. Please check our Web Site for the most current RoHS status.

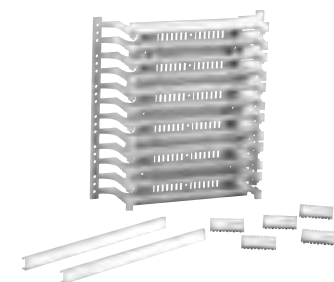
## 110 Cross-Connect System

110 Cross-Connect Kits, 110 Connecting Blocks,  
110 Wall Mount Frame Kits and 110 Wiring Blocks

AX100694 110 Cross-Connect Kit, 100-pair

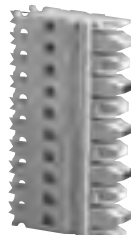
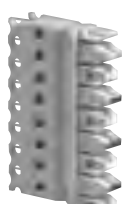


AX100696 110 Cross-Connect Kit, 300-pair



AX100707 110  
Connecting Block, 4-pair

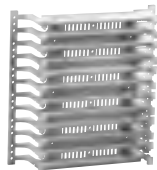
AX100708 110  
Connecting Block, 5-pair



AX100697 110 Wall Mount Frame Kit, 300-pair



AX100692 Wiring Block, 300-pair



AX100691 Wiring Block, 100-pair



### 110 Cross-Connect Kit

**110 Cross-Connect Kits** contain all material required to terminate distribution or equipment cables into a 110 Cross-Connect System. Kits consist of one Wiring Block (100-pair or 300-pair) with legs, Connecting Blocks (4-pair or 5-pair), Designation Strips and Labels.

### 110 Connecting Block

The **110 Connecting Blocks** are modular connectors equipped with double-sided Insulation Displacement Connection (IDC) clips that are used to terminate plastic insulated solid copper conductors in 110 Wiring Blocks. The color-coded connecting blocks are available in 4-pair and 5-pair configurations. These blocks are compatible with other existing 110 Cross-Connect Systems.

### 110 Wall Mount Frame Kit

**110 Wall Mount Frame Kits** simplify planning, organizing and implementation of wall mounted cross-connect systems. They are available in 300-pair and 900-pair configurations making them ideal for small telecommunications room installations. Kits consist of wiring blocks and cable management troughs to be mounted on a cable channel. Kits include all components required to complete a 110 Cross-Connect installation with either 4-pair or 5-pair connecting blocks.

### 110 Wiring Block

**110 Wiring Blocks** are rigid plastic indexing strip assemblies designed to hold and align wires prior to terminating 110 Connecting Blocks. 110 Wiring Blocks are available in 100-pair and 300-pair configurations with legs and 100-pair without legs. 110 Wiring Blocks are compatible with 22 to 26 AWG wires and accept 4-pair or 5-pair Connecting Blocks. They are specially designed to simplify data cabling installations. A deeper channel and open slots in the base allow cable to be brought close to the termination point. These blocks are compatible with other existing 110 Cross-Connect Systems.

Description	Belden Part Number
<b>110 Cross-Connect System</b>	
<b>110 Cross-Connect Kit</b>	
110 Cross-Connect Kit, 100-pair, with 4-pair Connecting Blocks	<b>AX100693</b>
110 Cross-Connect Kit, 100-pair, with 5-pair Connecting Blocks	<b>AX100694</b>
110 Cross-Connect Kit, 300-pair, with 4-pair Connecting Blocks	<b>AX100695</b>
110 Cross-Connect Kit, 300-pair, with 5-pair Connecting Blocks	<b>AX100696</b>
<b>110 Connecting Block</b>	
110 Connecting Block, 110C4, 4-pair	<b>AX100707</b>
110 Connecting Block, 110C5, 5-pair	<b>AX100708</b>
<b>110 Wall Mount Frame Kit</b>	
110 Wall Mount Frame Kit, 300-pair, with 4-pair Connecting Blocks	<b>AX100697</b>
110 Wall Mount Frame Kit, 300-pair, with 5-pair Connecting Blocks	<b>AX100698</b>
110 Wall Mount Frame Kit, 900-pair, with 4-pair Connecting Blocks	<b>AX100699</b>
110 Wall Mount Frame Kit, 900-pair, with 5-pair Connecting Blocks	<b>AX100700</b>
<b>110 Wiring Block</b>	
110 Wiring Block, 100-pair, without legs	<b>AX100690</b>
110 Wiring Block, 100-pair, with legs	<b>AX100691</b>
110 Wiring Block, 300-pair, with legs	<b>AX100692</b>

The 110 Cross-Connect System is not available in all countries.

These products are in the process of being assessed for RoHS compliance. Please check our Web Site for the most current RoHS status.

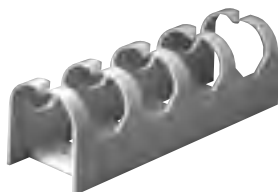
## 110 Cross-Connect System

### 110 Designation Strip and Management Accessories

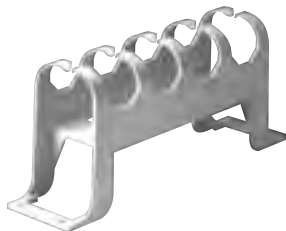
AX100721 110 Designation Strip



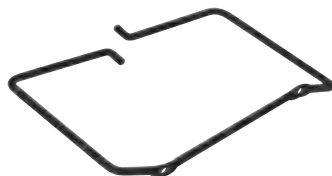
AX100705 Cable Management Trough



AX100706 Cable Management Trough with Legs



AX100703 Cable Management Ring



AX100701 Wall Mount Cable Management Frame, 300-pair



#### 110 Designation Strip

The **110 Designation Strip** is designed to be used in conjunction with all 110 Wiring Blocks. It snaps in between two rows of 110 Connecting Blocks and provides space to insert a designation label. The strip is made of clear PVC.

#### 110 Management Accessories

**Cable Management Troughs** are utilized as channels positioned between wiring blocks for horizontal or vertical dressing of cross-connect wires and patch cords. They are available with and without mounting legs.

**Cable Management Rings** are used for management of cross-connect wires and cables in 110 Cross-Connect Systems. They can be mounted directly onto a plywood backboard between columns of wiring blocks. They are available in two different sizes.

**Wall Mount Cable Management Frames** are pre-assembled vertical cable managers that are used between 110 Wall Mount Frame Kits for vertical management of patch cords. They simplify planning and installation of 110 Cross-Connect Systems. They are available in two sizes to use with 300-pair and 900-pair Wall Mount Frame Kits.

Description	Belden Part Number
<b>110 Cross-Connect System</b>	
<b>110 Designation Strip</b>	
110 Designation Strip	AX100721
<b>110 Management Accessories</b>	
Cable Management Trough, without legs	AX100705
Cable Management Trough, with legs	AX100706
Cable Management Ring, Small 144.8 mm (5.7 in.)	AX100703
Cable Management Ring, Large 216 mm (8.5 in.)	AX100704
Wall Mount Cable Management Frame, 300-pair	AX100701
Wall Mount Cable Management Frame, 900-pair	AX100702

The 110 Cross-Connect System is not available in all countries.

These products are in the process of being assessed for RoHS compliance. Please check our Web Site for the most current RoHS status.

## 110 Cross-Connect System

### 110 Patch Cords

AX300001 PS5E 110 Patch Cord, 110-110, 4-pair



AX300010 PS5E 110 Patch Cord, 110-8MOD, 4-pair



AX300013 110 Patch Cord, 110-110, 2-pair



#### 110 Patch Cord

**110 Patch Cords** allow for high density connections in a 110 Cross-Connect System. 110 Patch Cord rearrangements do not require any special tools or training thus providing flexibility for cost-effective installation and administration. 110 Patch Cords are available in two different configurations. 110-110 patch cord configurations are used for easy cross-connection between equipment and distribution fields.

110-8MOD patch cord configurations are used to easily interconnect equipment utilizing 8-position modular jacks directly into 110C4/C5 connecting blocks in the distribution field. PS5E 110 Patch Cords offer Category 5e performance. These patch cords are compatible with other existing 110 Cross-Connect systems.

#### 110 Patch Cord Connector

**110 Patch Cord Connectors** are available in 1, 2 and 4-pair configurations for field assembly of Category 5 patch cords. They can terminate plastic insulated stranded copper conductors 24 AWG.

Description	Belden Part Number
<b>110 Cross-Connect System</b>	
<b>110 Patch Cord</b>	
110 Patch Cord, PS5E 110-110, 4-pair, 1.2 m (4 ft.)	AX300001
110 Patch Cord, PS5E 110-110, 4-pair, 1.8 m (6 ft.)	AX300002
110 Patch Cord, PS5E 110-110, 4-pair, 2.4 m (8 ft.)	AX300025
110 Patch Cord, PS5E 110-110, 4-pair, 3.0 m (10 ft.)	AX300026
110 Patch Cord, PS5E 110-110, 4-pair, 6.1 m (20 ft.)	AX300027
110 Patch Cord, PS5E 110-8MOD, 4-pair, T568A, 1.2 m (4 ft.)	AX300010
110 Patch Cord, PS5E 110-8MOD, 4-pair, T568A, 1.8 m (6 ft.)	AX300009
110 Patch Cord, PS5E 110-8MOD, 4-pair, T568A, 2.4 m (8 ft.)	AX300029
110 Patch Cord, PS5E 110-8MOD, 4-pair, T568A, 3.0 m (10 ft.)	AX300030
110 Patch Cord, PS5E 110-8MOD, 4-pair, T568A, 6.1 m (20 ft.)	AX300032
110 Patch Cord, PS5E 110-8MOD, 4-pair, T568B, 1.2 m (4 ft.)	AX300008
110 Patch Cord, PS5E 110-8MOD, 4-pair, T568B, 1.8 m (6 ft.)	AX300005
110 Patch Cord, PS5E 110-8MOD, 4-pair, T568B, 2.4 m (8 ft.)	AX300011
110 Patch Cord, PS5E 110-8MOD, 4-pair, T568B, 3.0 m (10 ft.)	AX300034
110 Patch Cord, PS5E 110-8MOD, 4-pair, T568B, 6.1 m (20 ft.)	AX300017
110 Patch Cord, 110-110, 2-pair, 1.2 m (4 ft.)	AX300013
110 Patch Cord, 110-110, 2-pair, 1.8 m (6 ft.)	AX300014
110 Patch Cord, 110-110, 2-pair, 2.4 m (8 ft.)	AX300015
110 Patch Cord, 110-110, 2-pair, 3.0 m (10 ft.)	AX300037
110 Patch Cord, 110-110, 2-pair, 6.1 m (20 ft.)	AX300038
110 Patch Cord, 110-110, 1-pair, 0.6 m (2 ft.)	AX300039
110 Patch Cord, 110-110, 1-pair, 1.2 m (4 ft.)	AX300006
110 Patch Cord, 110-110, 1-pair, 1.8 m (6 ft.)	AX300007
110 Patch Cord, 110-110, 1-pair, 2.4 m (8 ft.)	AX300012
110 Patch Cord, 110-110, 1-pair, 3.0 m (10 ft.)	AX300021
110 Patch Cord, 110-110, 1-pair, 6.1 m (20 ft.)	AX300040
<b>110 Patch Cord Connector</b>	
110 Patch Cord Connector, 4-pair	AX100711
110 Patch Cord Connector, 2-pair	AX100710
110 Patch Cord Connector, 1-pair	AX100709

The 110 Cross-Connect System is not available in all countries.

Other lengths are available, please contact Customer Service for further details.

These products are in the process of being assessed for RoHS compliance. Please check our Web Site for the most current RoHS status.